

Development Notification Process Overview

Helpful Tips

1. Start Early

Paperwork must be submitted at least 45 days prior to construction per 14 CFR 139 Part 77. The time frame for the FAA to process the paperwork generally take 30-45 days (sometimes longer) and construction cannot be started until the paperwork is completed.

2. Use the Notice Criteria Tool

Located on the OEAAA website, this tool allows companies to enter the latitude, longitude, and height of a proposed structure and quickly determines whether a FAA Form 7460-1 needs to be filed and sent for review. This can save you the time of filing a Form 7460-1 when there isn't a need to do so.

3. Contact Local Airport

Airport officials will be more than willing to assist you through the process.

Contact Information

FAA Specialist (Indiana):

(847)294-7575

Airport Operations Department:

(260)446-3434

Websites

oeaaa.faa.gov

www.faa.gov

www.fwairport.com

The purpose of this document is to help companies understand the process of developing a site or structure in close proximity to the airport.

FAA notification regarding building construction and development is important to protect the safety of air travel. FAA Form 7460-1 must be filed 45 days prior to construction per 14 CFR 139 Part 77. The process can take 30-45 days depending on how close the site or structure is to the airport, however some cases could take even longer. Persons who knowingly and willingly violate the notice requirements of part 77 are subject to a civil penalty of \$1,000 per day until the notice is received, pursuant to 49 U.S.C., Section 46301(a).

Below are several steps that can be taken to legally develop near Ft. Wayne Int'l.:

1. **Determine if Notification is Required** – This can be done by using the Notice Criteria Tool on the Obstruction Evaluation/Airport Airspace Analysis website.

The information you will need includes:

- a. Latitude and Longitude of the proposed Site
- b. Site elevation
- c. Structure height

2. **File the FAA Form 7460-1, Notice of Proposed Construction or Alteration** – The 7460-1 Form can be filled out and submitted online at oeaaa.faa.gov (there is no preceding “www.”). Companies will need to create an account on this website and once the account is created a company can login to fill out the application. To start a new application click the link titled “Add New Case Off Airport” on the left hand side of the webpage. The form will fill in the blanks for the information from Step 1.

3. **Submit the Form** – Once the form has been submitted, be sure to follow up with the FAA to ensure the form has been received.

4. **Obtain Letter of Determination and Airport Approval** – If the project is approved by the FAA, you will receive a “Determination of No Hazard” letter. The airport will approve projects once the “Determination of No Hazard” letter can be provided. If you receive a letter other than a “Determination of No Hazard,”

5. **Equipment Marking and Lighting** – All cranes and other equipment must be marked and lit as prescribed in the Obstruction Evaluation Office’s determination letter. Developers must all notify the Airport at least 48 hours prior to any crane being erected so a proper Notice to Airmen can be issued.

Reference Documents:

- Title 14 CFR Part 77 - *Safe, Efficient Use, and Preservation of the Navigable Airspace*
- Title 14 CFR Part 157 - *Notice of Construction, Alteration, Activation, and Deactivation of Airports*
- FAA Advisory Circular 70/460-1K – *Obstruction Marking and Lighting*

Land and Building Development near Fort Wayne International Airport

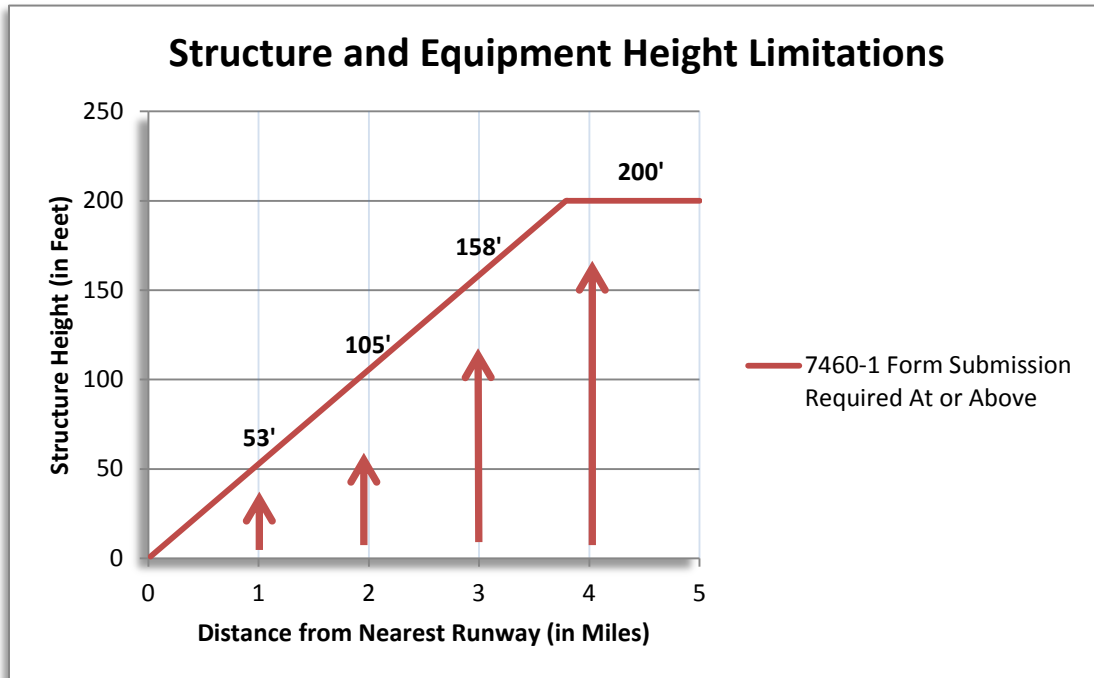
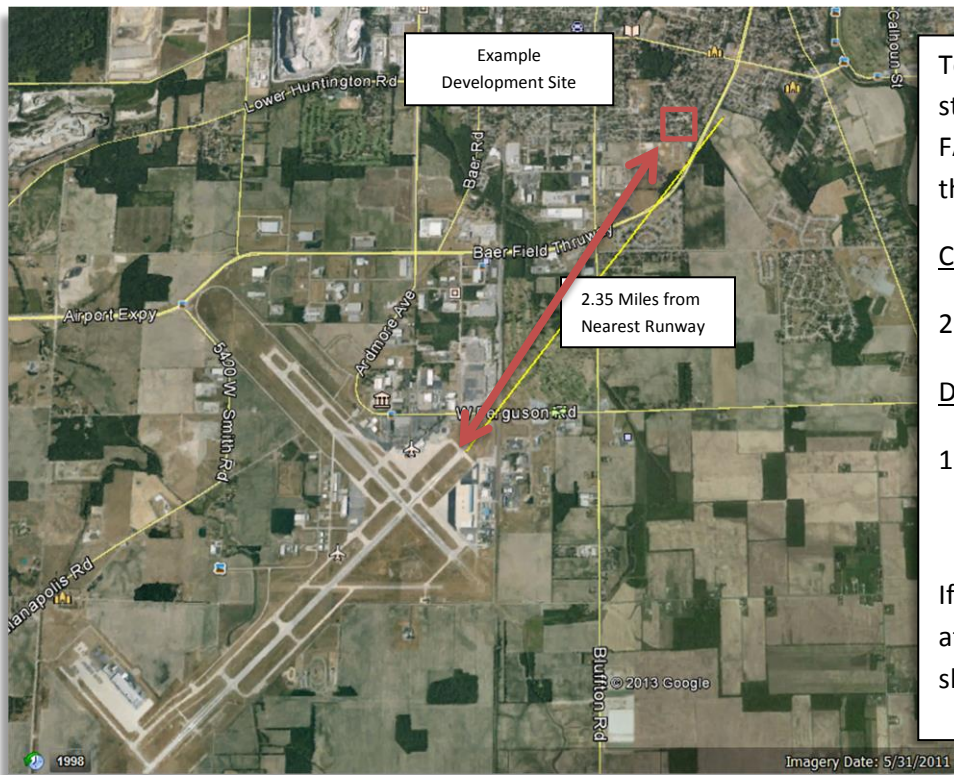


Figure 1: This chart depicts the structure and/or equipment height limitations relative to airport proximity. Structures and/or equipment at or above the depicted 100:1 slope values (in feet) are required to submit FAA Form 7460-1. ***IMPORTANT: This graph is for reference only. Some structures or equipment that fall below this line may still be required to submit FAA Form 7460-1***



To determine lowest structure/equipment height at which FAA Form 7460-1 is required, perform the following calculation:

Convert Miles to Feet
 $2.35(\text{miles}) \times 5280(\text{feet}) = 12,408(\text{feet})$

Divide by 100 to Determine Height Limit
 $12,408(\text{feet}) \div 100 = 124(\text{feet})$

If the structure and/or equipment is/are at or above **124 feet**, FAA Form 7460 -1 should be submitted

Example 1: Aerial example of a development site accompanied with a sample calculation

Land and Building Development near Smith Field Airport

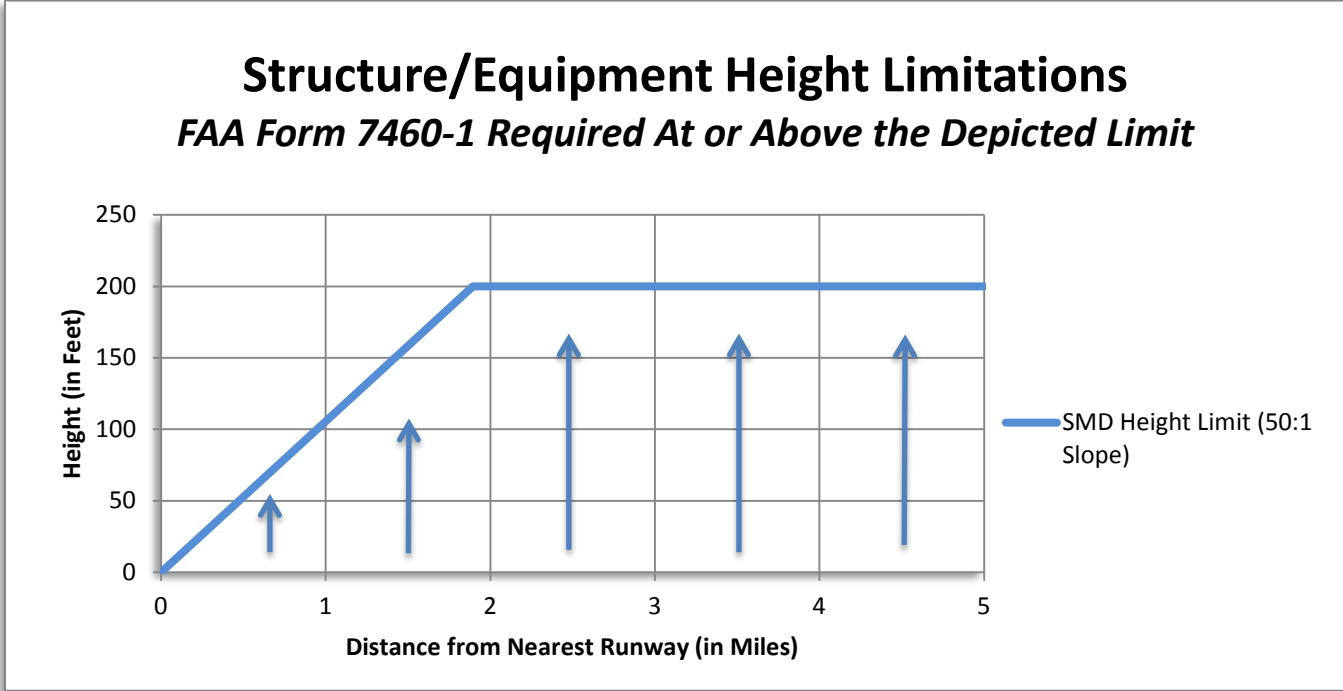


Figure 2: This chart depicts the structure and/or equipment height limitations relative to airport proximity. Structures and/or equipment at or above the depicted 50:1 slope values (in feet) are required to submit FAA Form 7460-1. ***IMPORTANT: This graph is for reference only. Some structures or equipment that fall below this line may still be required to submit FAA Form 7460-1***

To determine lowest structure/equipment height at which FAA Form 7460-1 is required, perform the following calculation:

Convert Miles to Feet

$0.5(\text{miles}) \times 5280(\text{feet}) = 2640(\text{feet})$

Divide by 50 to Determine Height Limit

$2640(\text{feet}) \div 50 = 52.8(\text{feet})$

If the structure/equipment is at or above **52.8 feet**, FAA Form 7460-1 should be submitted



Example 1: Aerial example of a development site accompanied with a sample calculation